



4. Error Messages and Troubleshooting

4.1 Error Messages

Table with 3 columns: Error Display, Cause, Solution. Lists error codes E1 through E7 with corresponding causes and solutions.

4.2 Troubleshooting

In case of any of the below problems occur during measurement, first check that no other electrical device is within 30cm. If the problem persists, please refer to the table below.

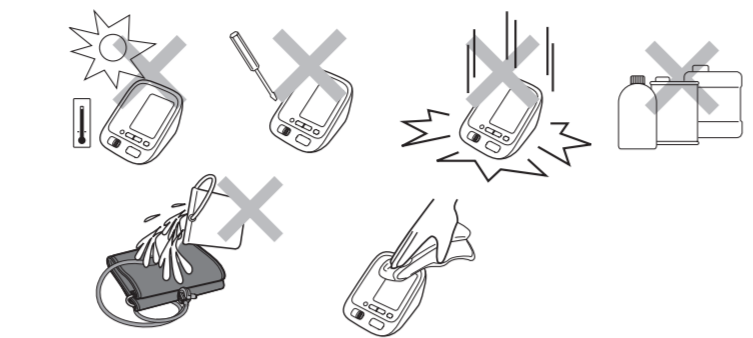
Table with 3 columns: Problem, Cause, Solution. Lists common troubleshooting issues like 'The measurement result is extremely high (or low)', 'Arm cuff pressure does not rise', etc.

Your Blood Pressure Monitor is supplied with a cuff having a circumference of 22-32cm. Should you require a different sized cuff, contact Boots Customer Services or your local Boots store.

5. Maintenance and Storage

5.1 Maintenance

To protect your device from damage, please observe the following:
• Store the device and the components in a clean, safe location.
• Do not use any abrasive or volatile cleaners.



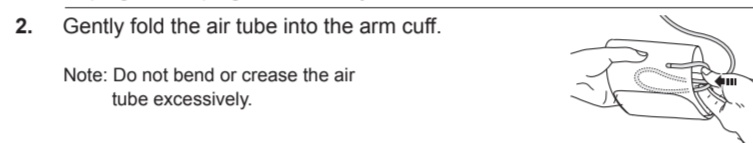
• Use a soft, dry cloth or a soft, damp cloth and neutral soap to clean the monitor and arm cuff.
• Modifications not approved by the manufacturer will void the user warranty.

5.2 Calibration and Service

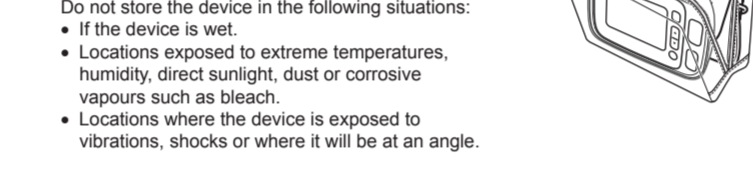
• The accuracy of this blood pressure monitor has been carefully tested and is designed for a long service life.
• It is generally recommended to have the device inspected every 2 years to ensure correct functioning and accuracy.

5.3 Storage

Keep the device in its storage case when not in use.
1. Unplug the air plug from the air jack.
2. Gently fold the air tube into the arm cuff.



Do not store the device in the following situations:
• If the device is wet.
• Locations exposed to extreme temperatures, humidity, direct sunlight, dust or corrosive vapours such as bleach.



5.3 Optional Accessories



If you wish to purchase an AC adapter, contact Boots Customer Services or your local Boots store.

Using the Optional AC Adapter

Note: Make sure to use an easily accessible power socket in which to connect and disconnect the AC adapter.

- 1. Insert the AC adapter plug into the AC adapter jack on the rear side of the monitor.
2. Plug the AC adapter into an electrical outlet.

To disconnect the AC adapter, unplug the AC adapter from the electrical outlet first and then remove the AC adapter plug from the monitor.

Your Blood Pressure Monitor is supplied with a cuff having a circumference of 22 - 42cm. Should you require a different sized cuff, contact Boots Customer Services or your local Boots store.

6. Specifications

Specifications table with columns for Product category, Display, Measurement method, Measurement range, Accuracy, Inflation, Deflation, Memory, Rating, Power source, Battery life, Operating temperature/humidity/air pressure, Storage, Weight, Outer dimensions, Cuff circumference, Cuff Tube material, Package contents.

Note:
• These specifications are subject to change without notice.
• In the clinical validation study, the 5th phase was used on 85 subjects for determination of diastolic blood pressure.

Table with 2 columns: Symbols description, Description. Lists safety symbols like IPXX, SN, LOT, and environmental symbols like temperature and humidity limitations.

Correct Disposal of This Product (Waste Electrical & Electronic Equipment)

This symbol indicates that the product should not be disposed of with other household waste at the end of its working life. To prevent possible harm to the environment or human health from uncontrolled waste disposal, please separate this product from other types of wastes and recycle it responsibly to promote the sustainable reuse of material resources.

7. Electro Magnetic Compatibility

Important information regarding Electro Magnetic Compatibility (EMC)
HEM-8713-B5 manufactured by OMRON HEALTHCARE Co., Ltd. conforms to EN60601-1-2:2015 Electro Magnetic Compatibility (EMC) standard.

- The use of accessories and cables other than those specified or provided by OMRON could result in increased electromagnetic emission or decreased electromagnetic immunity of the device and result in improper operation.
• During measurement, the use of the device adjacent to or stacked with other device should be avoided because it could result in improper operation.

Table 1 - EMISSION Limits and Compliance

Table with 3 columns: Phenomenon, EMISSION Limits, Compliance. Lists conducted and radiated RF emissions, voltage fluctuations, and flicker.

Table 2 - IMMUNITY TEST LEVELS

Table with 3 columns: Phenomenon, Basic EMC standard, IMMUNITY TEST LEVELS. Lists electrostatic discharge, radiated RF electromagnetic fields, proximity fields, electrical fast transients, surges, conducted disturbances, rated power, voltage dips, and voltage interruptions.

Table 3 - Test specifications for ENCLOSURE PORT IMMUNITY to RF wireless communications device

Table with 7 columns: Test frequency (MHz), Band (MHz), Service, Modulation, Maximum power (W), Distance (m), IMMUNITY TEST LEVEL (V/m). Lists test specifications for various frequencies and services like TETRA, GSM, LTE, WLAN.

EMC tests have included the AC-adapter as included with the product.

8. Warranty

Thank you for buying a Boots Pharmaceuticals product. This product is constructed of high quality materials and great care has been taken in its manufacturing. It is designed to give you every satisfaction, provided that it is properly operated and maintained as described in the instruction manual.

- a. Transport costs and risks of transport.
b. Costs for repairs and / or defects resulting from repairs done by unauthorised persons.
c. Periodic check-ups and maintenance.
d. Failure or wear of optional parts or other attachments other than the main device itself, unless explicitly guaranteed above.

Made in Vietnam
OMRON HEALTHCARE Co., Ltd.
53, Kunotsubo, Terado-cho, Muko, KYOTO, 617-0002 JAPAN



OMRON HEALTHCARE EUROPE B.V.
Scorpius 33, 2132 LR Hooftdorp, THE NETHERLANDS
www.omron-healthcare.com



TECHNICAL INFO: PRINTER PLEASE NOTE
Trident have created this artwork to a generic print process specification and repro has not been applied. Please call your Boots contact to discuss any amendments or if anything falls beneath your print tolerances.

ARTWORK ONLY

Technical data table with fields: Trident Reference No., Gen Ref., Category, Sub-Category, Brand, Pack Type, Variant, Action, Date, Country.

Component Code: 9701940-6D
Item Code: 66-13-926

CAD Ref No.: 60 x 420 mm
Printer: N/A
Substrate: White Paper

Barcode Type: N/A
Barcode Number: N/A
Magnification: N/A
Barcode translated By: N/A
(EmaRest bar)
Edgemark Position: n/a
Pharmcode: NA/NE: N/A

Technical & Non-Printing Items
Cutter, Stakes



Please note that any low resolution paper Canon colour copies associated with this job should be referred to for content, layout and colour separation only.

UNDER NO CIRCUMSTANCES SHOULD THIS ARTWORK BE ALTERED WITHOUT PRIOR PERMISSION FROM TRIDENT.

STUDIO USE ONLY: Michael Woodhead
Print Art check results: G=1, O=17, B=0, -MM- 0401/17 14:01:08